

LED Intelligent Driver

- Dimming interface: DALI DT8, Push DIM/CCT
- 2 independently SELV constant voltage output channels.
- DALI DT8, DIM and color temperature adjusting driver.
- Constant power design, adjust different color temperature to keep the same brightness.
- Dimming range from 0-100%, LED start at 0.1% possible.
- Color temperature adjusting range: 2700-6500K
- 0-100% flicker-free, achieve the level of exemption assessment.
- Over-heat / Over voltage / Over load / Short circuit protection, recover automatically.
- Standby Power Loss: <0.5W
- Full protective plastic housing.
- Compliant with Safety Extra Low Voltage standard.
- Suitable for indoor I/II/III type lamps application.



Flicker-free

Achieve the exemption level. DT8 DIM & CT adjustment



Dimmable:

0.1%-100%



SELV



RoHS



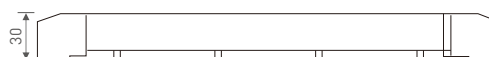
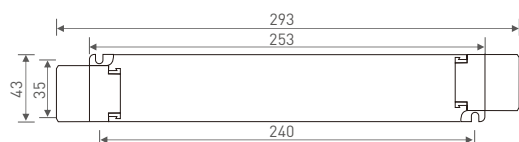
Specification

| Model | LM-75-12-G2D2 | LM-75-24-G2D2 | LM-100-24-G2D2 | |
|----------------------|---------------------------|--|--|-------------------------------|
| OUTPUT | Output Voltage | 12Vdc | 24Vdc | |
| | Output Voltage Range | 12Vdc ±0.5Vdc | 24Vdc ±0.5Vdc | |
| | Output Current | Max. 6.25A | Max. 3.12A | Max. 4.17A |
| | Output Power | Max. 75W | | Max. 100W |
| | Output Power Range | 0~75W | | 0~100W |
| | Strobe Level | High frequency exemption level. | | |
| | Dimming Range | 0~100%, dimming depth: Max. 0.1% | | |
| | Overload Power Limitation | ≥ 102% | | |
| | Ripple & Noise | ≤ 200mV | ≤ 300mV | |
| PWM Frequency | ≤ 3600Hz | | | |
| INPUT | Dimming Interface | DALI DT8(IEC62386), Push DIM/CCT | | |
| | Input Voltage | 200-240Vac | | |
| | Frequency | 50/60Hz | | |
| | Input Current | Max. 0.4A/230Vac | Max. 0.5A/230Vac | |
| | Power Factor | PF>0.97/230Vac, at full load | | PF>0.98/230Vac, at full load |
| | THD | ≤ 14% at 230Vac, at full load | | ≤ 12% at 230Vac, at full load |
| | Efficiency [typ.] | 91% | 92% | 93% |
| | Standby Power Loss | <0.5W | | |
| | Inrush Current[typ.] | Cold start 30A at 230Vac (twidth=1000µs measured at 50% Ipeak) | Cold start 45.2A at 230Vac (twidth=372µs measured at 50% Ipeak) | |
| | Control surge capability | L-N:2KV | | |
| Leakage Current | Max. 0.5mA | | | |
| ENVIRONMENT | Working Temperature | ta: -20°C ~ 50°C tc: 80°C | | |
| | Working Humidity | 20 ~ 95%RH, non-condensing | | |
| | Storage Temp., Humidity | -40°C ~ 80°C, 10-95%RH | | |
| | Temp. Coefficient | ±0.03%/°C (0-50°C) | | |
| | Vibration | 10~500Hz, 2G 12min./1cycle, period for 72min. each along X, Y, Z axes. | | |
| PROTECTION | Over-heat Protection | Intelligently adjusting or turning off the output current if the PCB temperature ≥ 110°C, auto recovers. | | |
| | Over Voltage Protection | Shut down the output when non-load voltage ≥ 13V, re-power on to recover after fault condition is removed. | Shut down the output when non-load voltage ≥ 26V, re-power on to recover after fault condition is removed. | |
| | Over Load Protection | Shut down the output when current load ≥ 102%, auto recovers. | | |
| | Short Circuit Protection | Enter hiccup mode if short circuit occurs, auto recovers. | | |
| SAFETY & EMC | Withstand Voltage | I/P-O/P: 3750Vac | | |
| | Isolation Resistance | I/P-O/P: 100MΩ/500VDC/25°C/70%RH | | |
| | Safety Standards | IEC/EN61347-1, IEC/EN61347-2-13 | | |
| | EMC Emission | EN55015, EN61000-3-2 Class C, IEC61000-3-3 | | |
| | EMC Immunity | EN61000-4-2,3,4,5,6,8,11 EN61547 | | |
| Strobe Test Standard | IEEE 1789 | | | |
| OTHERS | Dimension | 293×43×30mm(L×W×H) | | |
| | Packing | 296×44×33mm(L×W×H) | | |
| | Weight(G.W.) | 300g±10g | | |

* The driver is suitable for connecting resistor current-limiting LED fixture (e.g. LED strip). The instantaneous surge current will be several times increased if connecting built-in constant current IC current-limiting LED fixtures, the driver will activate the overloaded protection (hiccups flickering). When you order, please remark controlling the constant current LED fixture (e.g. MR16 lamp, underground light, LED wall washer, constant current LED strip, etc.), then we can prepare the special programs.

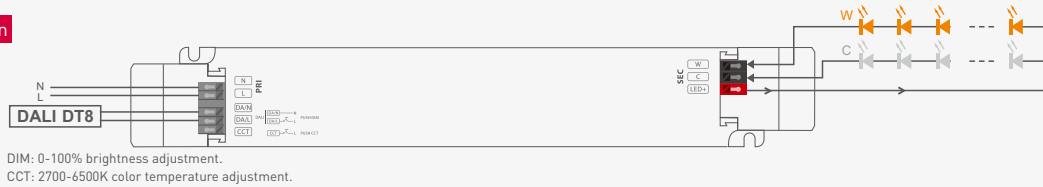
Dimensions

Unit: mm

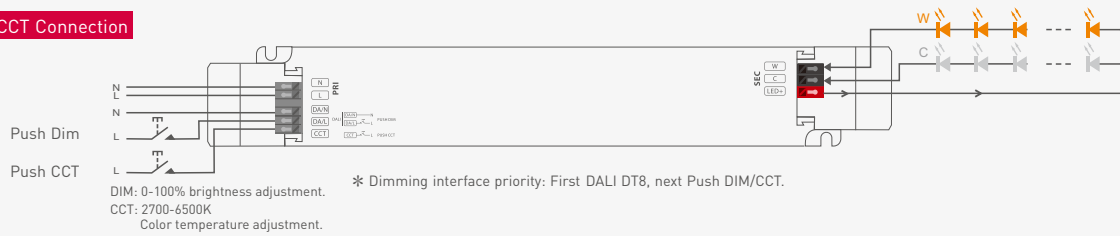


Wiring Diagram

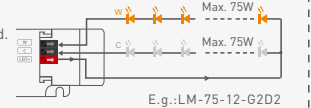
DALI DT8 Connection



Push DIM/CCT Connection



* Adopting constant power program design, it keeps the same brightness in color temperature dimming, twice the rated power load can be connected.
75W driver, 75W X 2CH load can be connected, the total power of the 2 channels will be kept in 75W.
100W driver, 100W X 2CH load can be connected, the total power of the 2 channels will be kept in 100W.



Push DIM/CCT



Reset switch

DIM

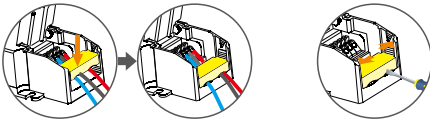
- On/off control: Short press.
- Stepless dimming: Long press.
- With every other long press, the light level goes to the opposite direction.
- Dimming memory: Brightness will be the same as previously adjusted when turning off and on again.

CCT

- Color temperature adjustment: Long press.
- With every other long press, the color temperature level goes to the opposite direction.
- Color temperature memory: Color temperature will be the same as previously adjusted when turning off and on again.

Application of Protective Cover

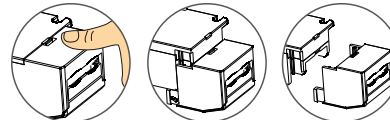
Wire pressing board:



Push the wire pressing board to fix the wire.

Push outward the side plate, meanwhile use the tool to uninstall the wire pressing board.

Uninstall protective cover:



Break off the bottom left and right to remove the protective cover.

Relationship Diagrams

